

# Installation of SAP Advantage Database Server

## Basics

The SAP Advantage Database Server (also referred to as ADS) is used by **texManager** for managing the databases. It manages the exclusive access to the databases in compliance with all file attributes and permissions (read, write and delete rights).

Der ADS-Server prevents data corruption, for example it does not allow for a record to be simultaneously edited by two parties. This ensures more stability and better performance, where applicable.

There are two versions of ADS:

- LOCAL SERVER - free of charge as DLL (ADSLOC32.DLL). For stand-alone solutions or in small networks with a maximum of 5 workstations. Working with texManager via Remote Desktop connection is not possible with the ADS Local Server.
- REMOTE SERVER - chargeable as a client/server database management system. Needed for larger networks (more than five workplaces) or RDP access (terminal server). The ADS remote server can be useful even in smaller networks - faster access is one of this version's benefits. The server-based transaction processing also prevents database corruptions (for example, "crashing" or network interruptions).

ADS licensing depends on the number of users.

ADS is available as both 32 and 64 bit versions (Windows).

## Installation

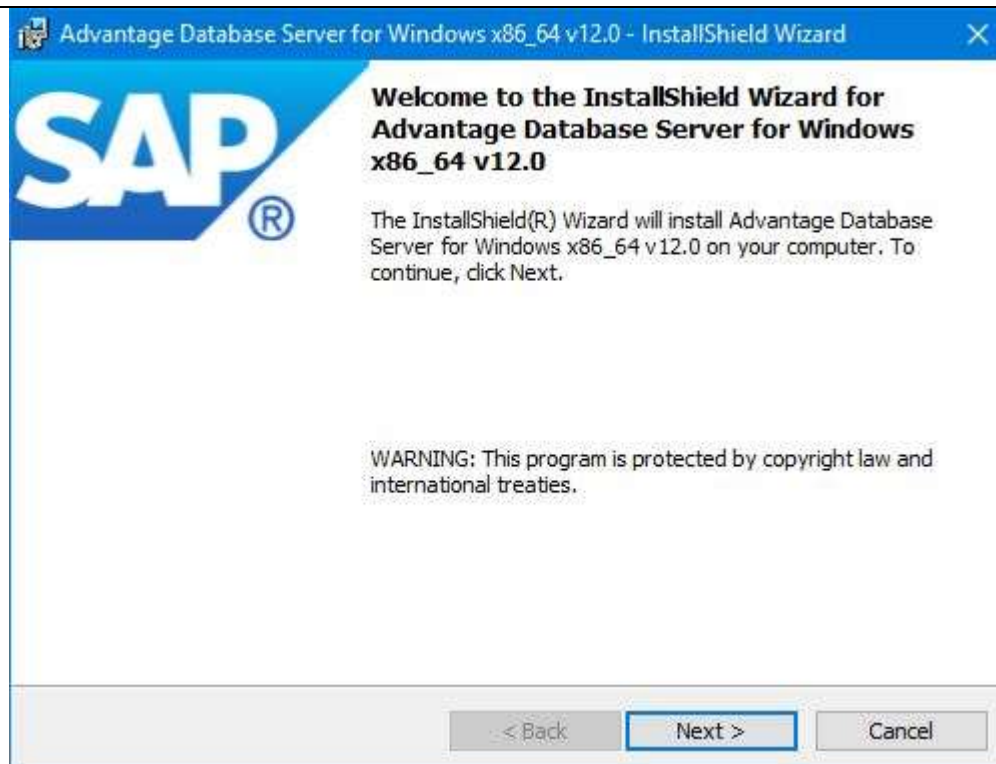
- The LOCAL SERVER (ADSLOC32.DLL) is installed automatically with texManager.
- The REMOTE-SERVERS must be installed separately. In order to do this you have to have the license key (serial) and the validation code. You can obtain this data from texManager support after placing the order.

The ADS must be installed on the texManager file-server, so on the same computer (server) as the texManager databases.

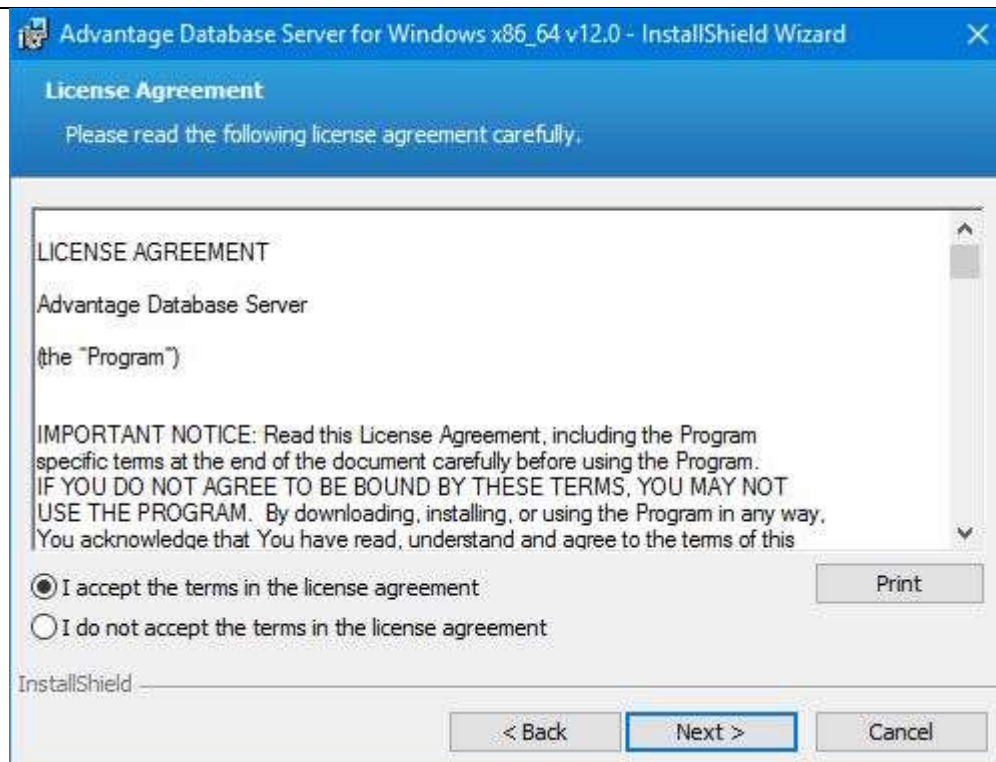
The installation requires administrator rights.

Windows 2016-Server or more recent versions: either disable the "Data Execution Prevention" (DEP) in Windows or add the ads.exe from the ADS program directory as an exception after the installation.

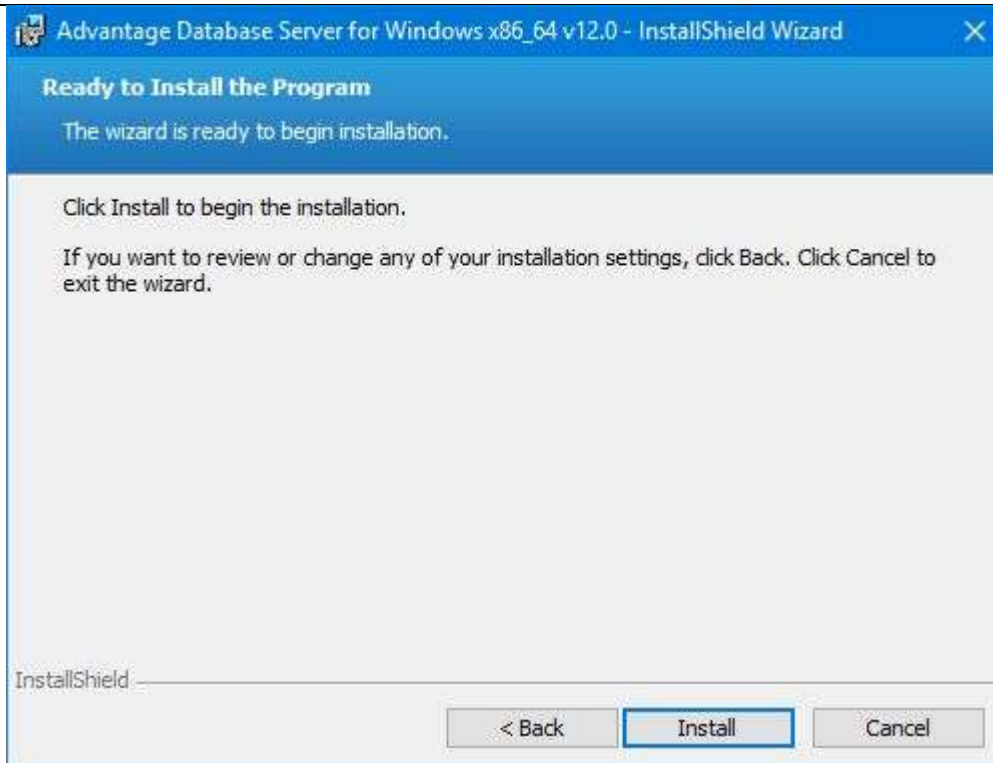
The installation routine starts:



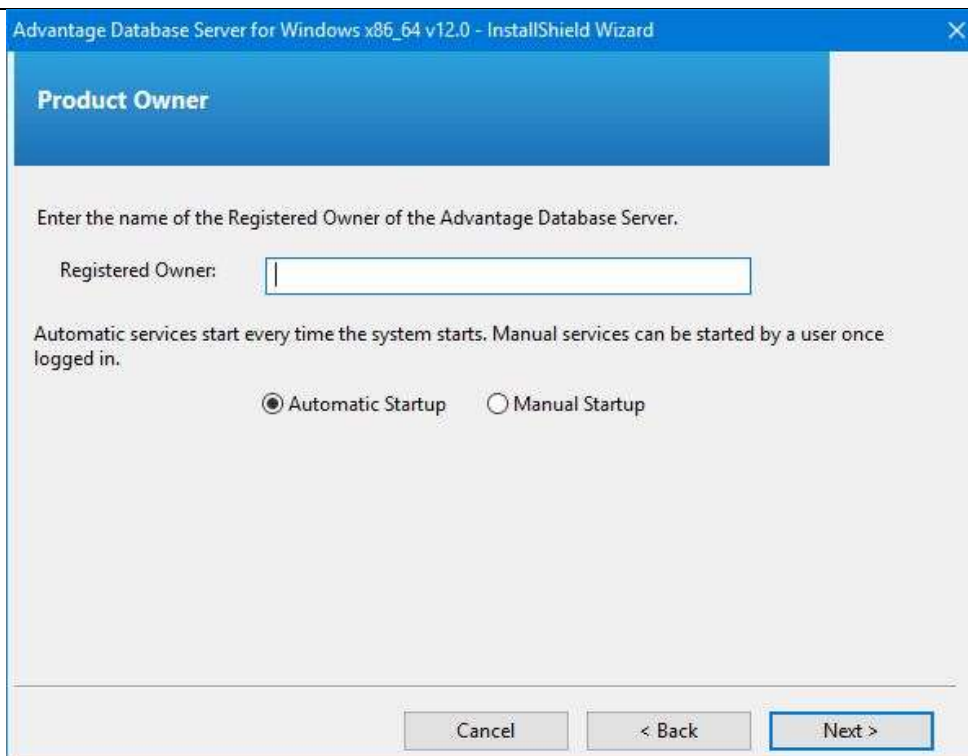
Confirm the SAP license conditions:



Click to start:



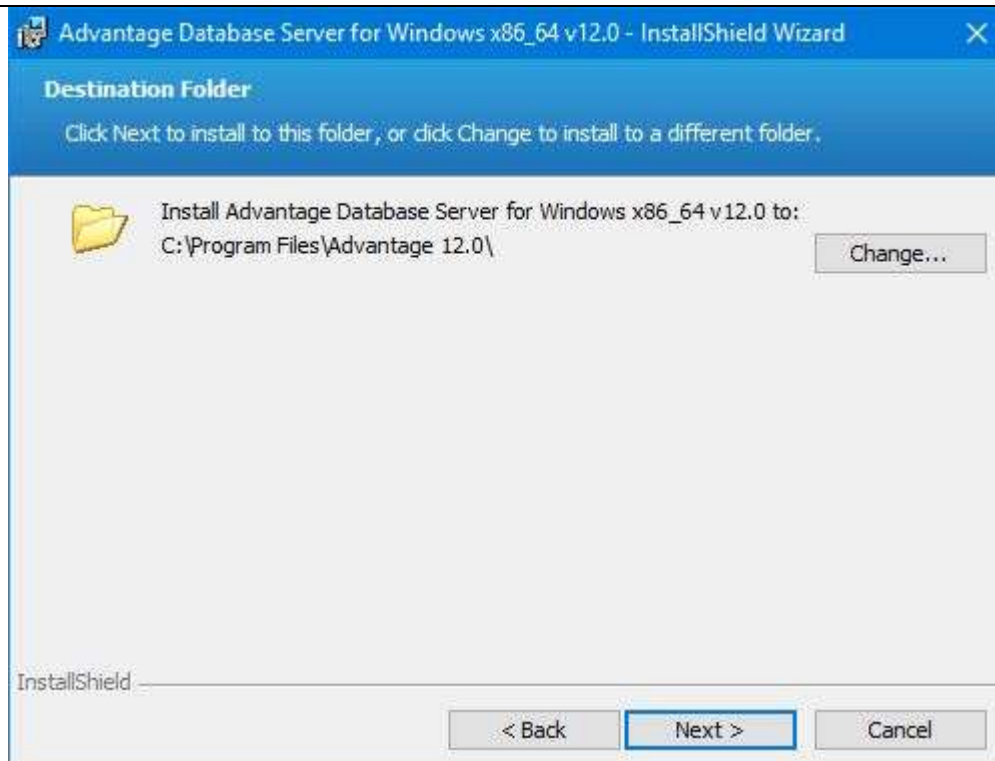
Enter the name of the owner:



## Security info:



## Set the ADS installation path:



Please select the "German" character set:

Advantage Database Server for Windows x86\_64 v12.0 - InstallShield Wizard

### ANSI Character Set

Please select an ANSI character set to use on the Advantage Database Server.

WARNING! To prevent data corruption, be sure to use the same character set on all Advantage servers including Advantage Local Server.

Please note that choosing <DEFAULT ON MACHINE> uses the installation workstation's character set. If versions of Advantage with different character sets share the same file, data corruption can occur.

Selecting a specific ANSI language for all Advantage installs (including Local Server) will guarantee the ANSI character sets used by all Advantage applications will be the same.

This setting does not apply to tables opened with OEM as the specified character set type, or to Advantage DOS applications.

GERMAN

Default on Machine: German

Cancel < Back Next >

Select "GERMAN" as local character set:

Advantage Database Server for Windows x86\_64 v12.0 - InstallShield Wizard

### OEM/Localized Character Sets

The following only applies if your Advantage applications use OEM/Localized character sets. Please select Next if your Advantage applications use ANSI character sets only.

The Advantage Database Server supports the following OEM/Localized character sets. Please select the set that matches your Advantage client applications.

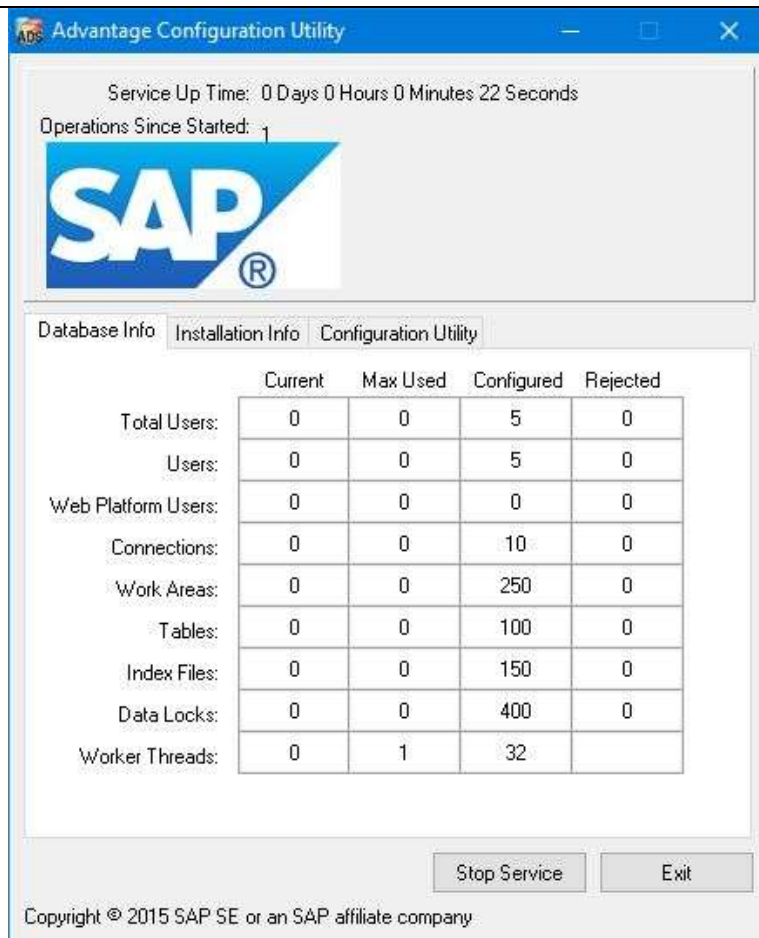
Selecting a specific OEM/Localized character set for all Advantage installs (including Local Server) will guarantee the OEM/Localized character sets used by all Advantage applications will be the same.

Use the list box to view the available OEM/Localized Character Sets:

GERMAN

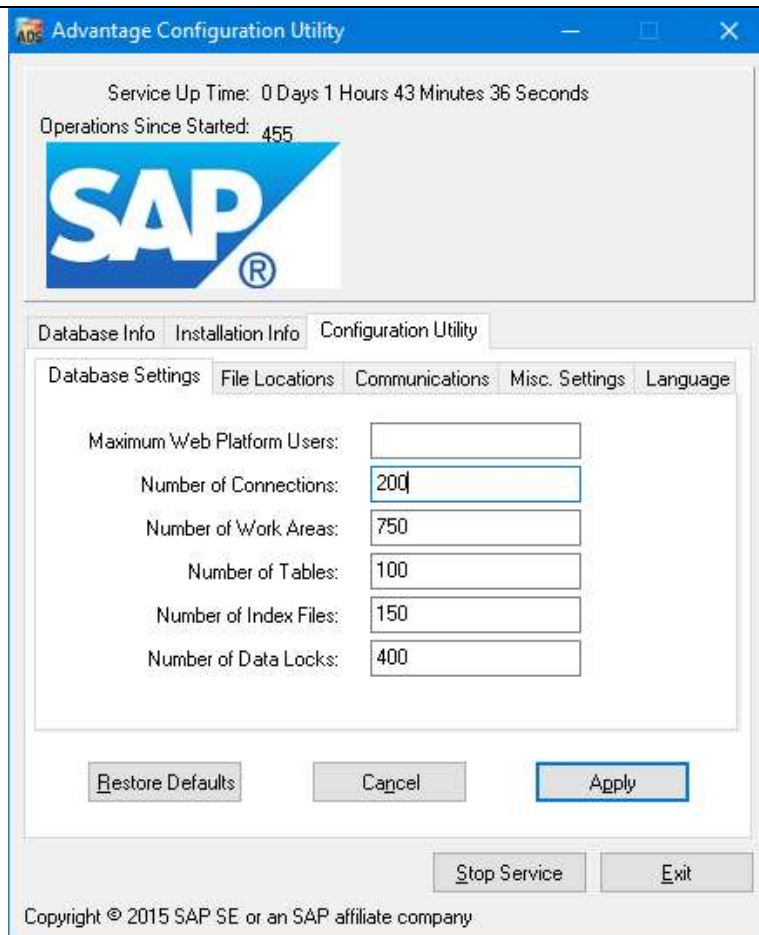
Cancel < Back Next >

The installation is finished and you can see the following window:

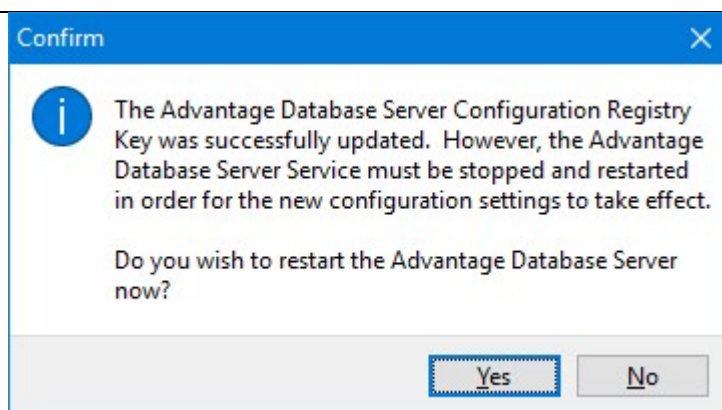




You just need to set the "**Database Settings**" in the "**Configuration Utility**" tab as illustrated here:

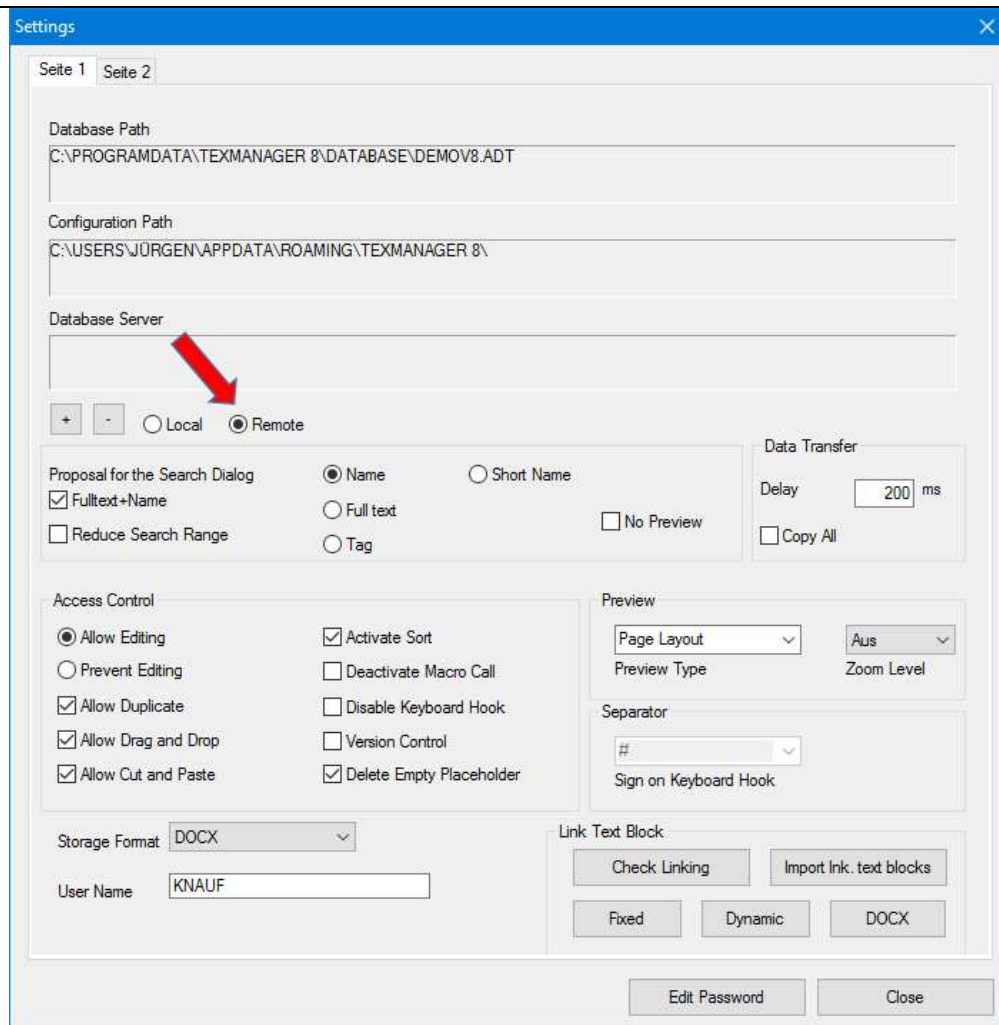


Confirm your settings with **Apply**. Click **Yes** on the following window to complete the installation



## Configuration in texManager:

Activate "Database Server" with "Remote" and restart texManager



The screenshot shows the 'Settings' dialog box for texManager, with 'Seite 1' selected. The 'Database Server' section is highlighted with a red arrow pointing to the 'Remote' radio button. The 'Database Path' is set to 'C:\PROGRAMDATA\TEXMANAGER 8\DATABASE\DEMOV8.ADT' and the 'Configuration Path' is 'C:\USERS\JÜRGEN\APPDATA\ROAMING\TEXMANAGER 8\'. The 'Database Server' section has a '+' button, a '-' button, and two radio buttons: 'Local' (unselected) and 'Remote' (selected). Below this, the 'Proposal for the Search Dialog' section has checkboxes for 'Fulltext+Name' (checked), 'Reduce Search Range' (unchecked), and radio buttons for 'Name' (selected), 'Short Name' (unselected), 'Full text' (unselected), and 'Tag' (unselected). There is also a 'No Preview' checkbox (unchecked). The 'Data Transfer' section has a 'Delay' of 200 ms and a 'Copy All' checkbox (unchecked). The 'Access Control' section has radio buttons for 'Allow Editing' (selected) and 'Prevent Editing' (unselected), and checkboxes for 'Allow Duplicate' (checked), 'Allow Drag and Drop' (checked), 'Allow Cut and Paste' (checked), 'Activate Sort' (checked), 'Deactivate Macro Call' (unchecked), 'Disable Keyboard Hook' (unchecked), 'Version Control' (unchecked), and 'Delete Empty Placeholder' (checked). The 'Preview' section has a 'Page Layout' dropdown (set to 'Aus') and a 'Zoom Level' dropdown (set to 'Aus'). The 'Separator' section has a dropdown (set to '#') and a 'Sign on Keyboard Hook' checkbox (unchecked). The 'Storage Format' is set to 'DOCX' and the 'User Name' is 'KNAUF'. The 'Link Text Block' section has buttons for 'Check Linking', 'Import Ink. text blocks', 'Fixed', 'Dynamic', and 'DOCX'. At the bottom, there are buttons for 'Edit Password' and 'Close'.